

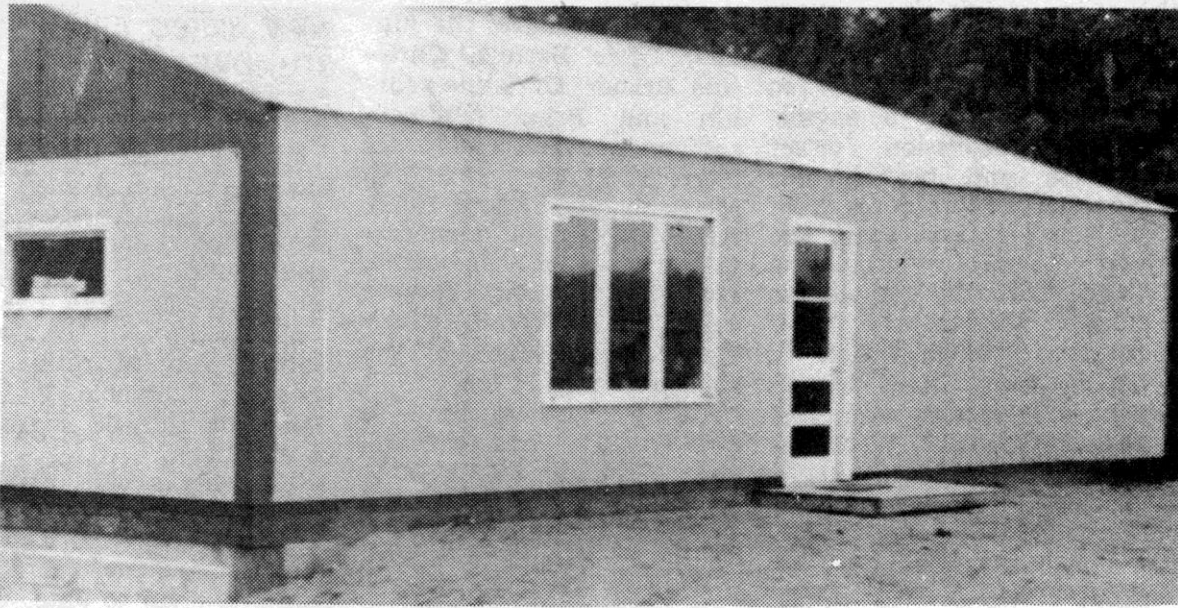
Diamond Drill

Out of the Past

June 12, 1974

Goodsell Molding Company held an open house at their new production facilities located on lower Superior Avenue (3E Superior). Goodsell is a wholly-owned subsidiary of Crane Packing Co. of Morton Grove, Illinois and the new 6,000 square foot Butler steel building plant manufactures components for the seals supplied for automotive and appliance industries. According to operations manager Al Wright, the plant currently employs 30 persons on a three shift basis who operate 26 molding presses, pellet-forming hardware, barrel finishers used to tumble the molded parts to remove "flash" and a large oven for heat treating of the components prior to shipment. The company has become the largest single industrial employer in the East Iron County Area.

Bill and Pat Nyari, who operate the Hideaway Resort on Butler Lake in Mansfield Township, have opened a new "Mini-Mart" retail store on Way Dam Road. The business features fishing supplies, bait, staple food items, candy, pop, ice cream etc. Located some 13 miles from Crystal Falls, 6 miles north of Hwy M-69 and 5 miles west of Channing, the convenience store will offer basic supplies to the public who would otherwise have to travel considerable distance for essentials.



### **NEW AREA BUSINESS**

A new area business, called the Mansfield Mini-Mart, has been established by Mr. and Mrs. William Nyari, who own and operate Hideaway Resort on Butler Lake, near the Way Reservoir. The Nyaris are pictured in the interior of the new building, partially completed but stocked with a beginning inventory of fishing tackle, staple food items, candy, ice cream, etc. The business is located on what is known as the Way Dam Road, where there is considerable traffic by vacationers and rural families living in the area. The business will be operated in conjunction with the Hideaway Resort property.

## **Mini-Mart Is Established At Butler Lake**