

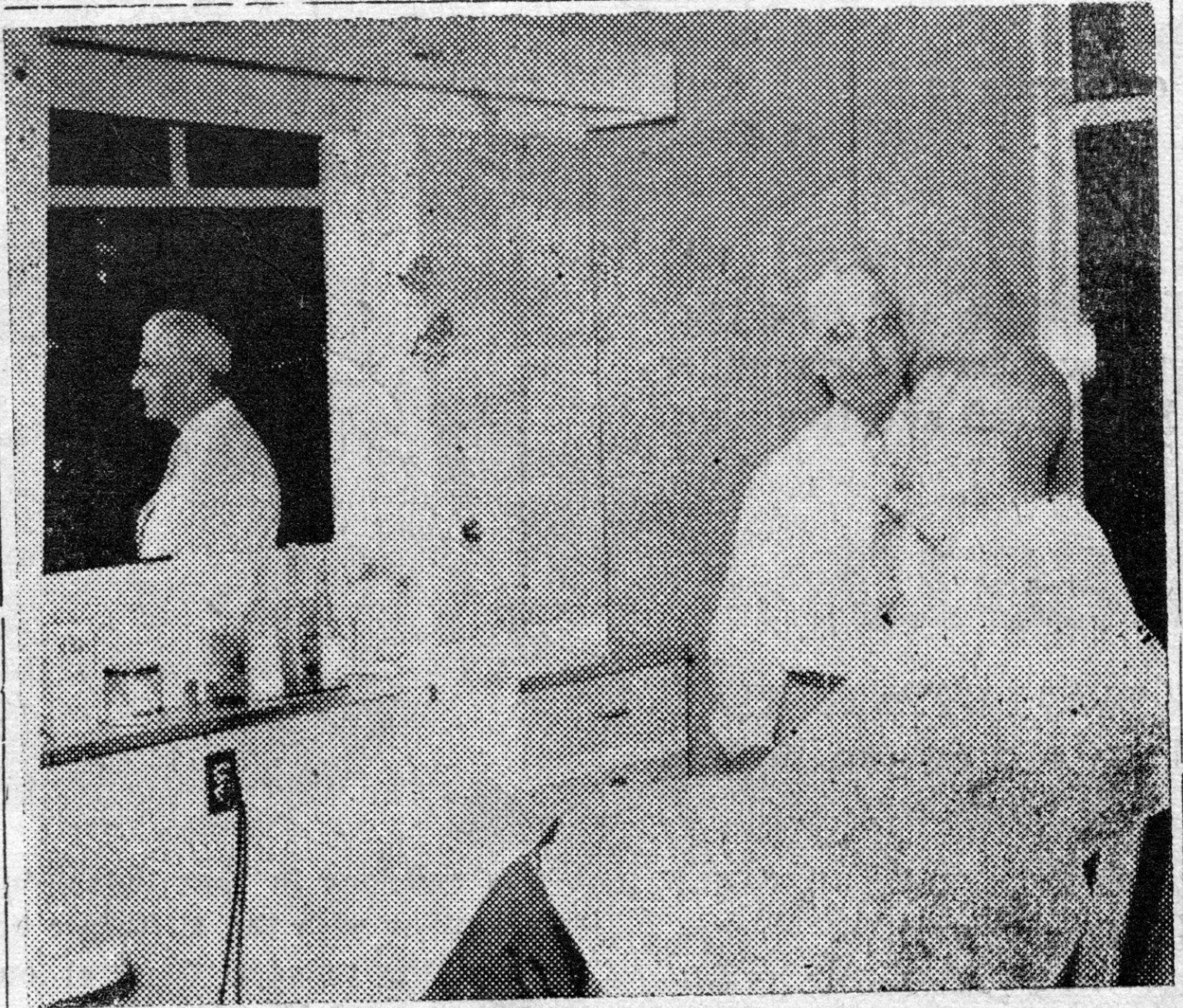
Diamond Drill

Out of the Past

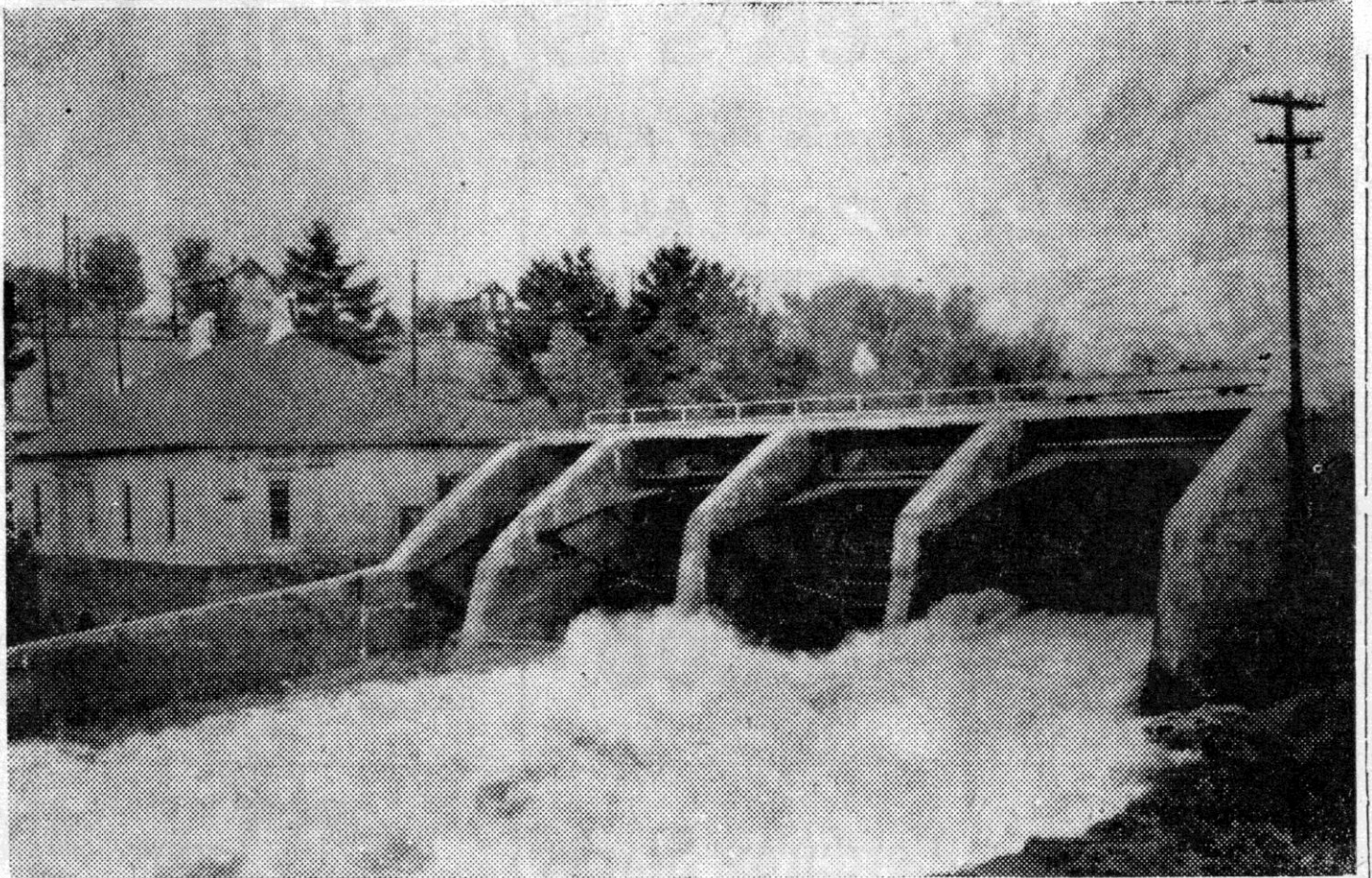
October 15, 1959

Willard Tromblay, who for the past 14 years has operated a barber shop in the basement level of the Crystal Inn (400 Superior) announced that he will relocate his business to his newly remodeled shop at 11 South Third Street behind the Flood Supply Building (237 Superior). Tromblay, who began cutting hair in 1908, has conducted business at various locations on Superior Avenue through the years. The new location is fondly remembered by old-timers as a Chinese laundry operated by the well-known Yep Jay who in the early years of Crystal Falls entertained local residents with his antics.

The rain swelled waters of the Paint River have been rushing through the gates at the City of Crystal Falls' power plant at a rate of up 2,600 cubic feet per second. For almost three weeks the plant's three generators have run at capacity, producing 1,000 KWH of electric current some of which is consumed locally with the excess sold to the Wisconsin Michigan Power Company. The gates have been open anywhere from a foot to seven and one half feet to prevent the water from spilling over the top of the retaining walls of the dam.



IN NEW QUARTERS—Falls barber Willard Tromblay is shown as he applies the finishing touches to one of the first haircuts completed in his new shop on Third street. Tromblay, who has been barbering for the past 50 years, got his start in the art at the age of 15. He moved his business to the new shop last week from the Crystal Inn where he has done business for the past 14 years. (Drill photo)



WHITE WATER—Early fall rains, which have raised the level of the Paint river to an unseasonable high level in recent weeks was pouring through the municipal power plant gate last weekend. According to power plant personnel, the gate at the dam has been open continuously for the past 18 days as heavy rains swelled the river and raised water levels as much as a foot above normal. See story. (Drill Photo)